

B&G 2017

COMPACT

PERFORMANCE

GRAND PRIX



A Passion for Sailing

SAILING ELECTRONICS FOR **CRUISING** AND **RACING**

A Passion for

B&G has been at the cutting edge of sailing innovation for 60 years. Whether you're motivated by the thrill of your next race or a passion for cruising, our electronics are designed for you.

Our racing heritage gives us an unrivalled platform for developing new technology, which is put through its paces by the world's best, in the most challenging conditions. You'll find B&G powering Grand Prix victories and inspiring the adventures of cruising sailors.



B&G

OFFICIAL SUPPLIER

**VOLVO
OCEAN
RACE**

ROUND THE WORLD

B&G are proud to be an Official Supplier to the 2017/18 Volvo Ocean Race. B&G has been on every winning round the world race boat since the first race.

Sailing

B&G



COMPACT



PERFORMANCE



GRAND PRIX

Stefan Coppers / Team Brunel / Volvo Ocean Race

Contents

| | |
|---|---------|
| THE BENEFITS OF SAILING WITH B&G CHARTPLOTTERS | 04 - 05 |
| COMPACT RANGE | 06 - 11 |
| VULCAN | 08 - 09 |
| TRITON ² | 10 |
| TRITON ² PILOTS | 11 |
| PERFORMANCE RANGE | 12 - 20 |
| ZEUS ³ | 14 - 15 |
| ZEUS ² | 16 |
| PERFECT FOR MULTIHULLS | 17 |
| H5000 | 18 - 20 |
| GRAND PRIX SYSTEMS | 21 |
| EXPAND YOUR B&G SYSTEM | 22 - 24 |
| RADAR | 25 |
| INCREASE YOUR B&G FUNCTIONALITY | 26 |
| WORLDWIDE SUPPORT | 27 |

The Benefits of Sailing with B&G



B&G Chartplotters

B&G Chartplotters provide an easy-to-use, multitouch, navigation system. View all of the data you need in one place, add waypoints, see routes and much more.



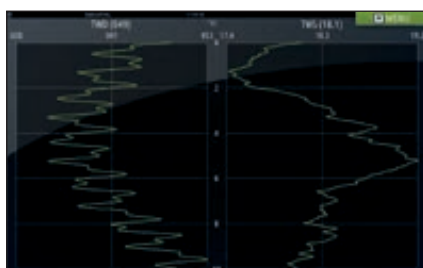
Laylines & SailingTime

SailingTime provides accurate time-to-layline and time-to-waypoint information for sailors.



Autopilot Control

Engage and take charge of the autopilot direct from your B&G chartplotter and enjoy the reassurance of seamless integration and control, while you sit back and relax.



WindPlot

Track weather trends and the movement of wind over time with WindPlot and judge conditions using an easy-to-read, real-time wind trend histogram.



Startline

Powerful scaled start line view. Simply set by adding the line end positions from a choice of "Ping", waypoint position, cursor position or range and bearing from current position. StartLine gives you what you need to win the start.

Chartplotters



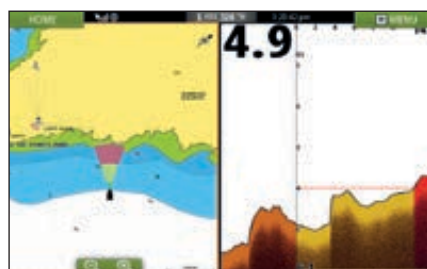
Charts

B&G offers you the widest choice of charts for sailing, from mapping leaders C-MAP and Navionics® to specialist chart provider NV Digital and many more for accurate, informed navigation.



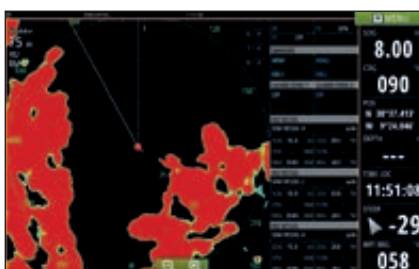
SailSteer

One easy and powerful instrument view combining all essential sailing data. Heading, Wind, Laylines, Tide, Waypoint and Wind Shift sectors. Trust SailSteer to handle the numbers so you can enjoy a perfect day on the water.



ForwardScan®

See what lies ahead under the water with approaching depth information. Sail poorly-charted or unfamiliar waters confidently with a clear image of the bottom ahead of your boat.



Radar

Access and monitor your radar output conveniently from the chartplotter display for total control and awareness in a fully integrated sailing navigation system (Not available on Vulcan 5 or 7).



WIFI

This wireless technology provides an unprecedented level of connectivity between your chartplotters, tablets and smartphones. Download the free software to view (smartphone) and control (tablet) from almost anywhere on board.

Compact Range

The B&G Compact Range has been put together especially for the coastal cruising sailor and club racer. These products have been designed and selected to make equipping your boat as simple and easy as possible.

With its superior flexibility and versatility Vulcan forms the heart of the Compact Range and is very much a "do everything" display that can be used on any sailboat.

- Easy to use Chartplotter
- Add to existing instruments to get B&G's Award Winning Sailing features
- Set-up an NMEA2000® network on a new yacht or during a refit

Vulcan

- SailSteer
- SailingTime
- Laylines
- Integrated Wi-Fi for GoFree
- Compatible with Navionics®, C-MAP and other cartography options
- Bright LED backlit display
- Internal 10Hz GPS/GLONASS antenna
- 5", 7" and 9" models



Triton² Display

- Display wind, speed, depth, heading, GPS, AIS and more
- Large 4.1-inch colour display
- Brightest Transflective LCD screen
- Unique sailing features including SailSteer and WindPlot
- Easy to use, easy to install
- Low power consumption



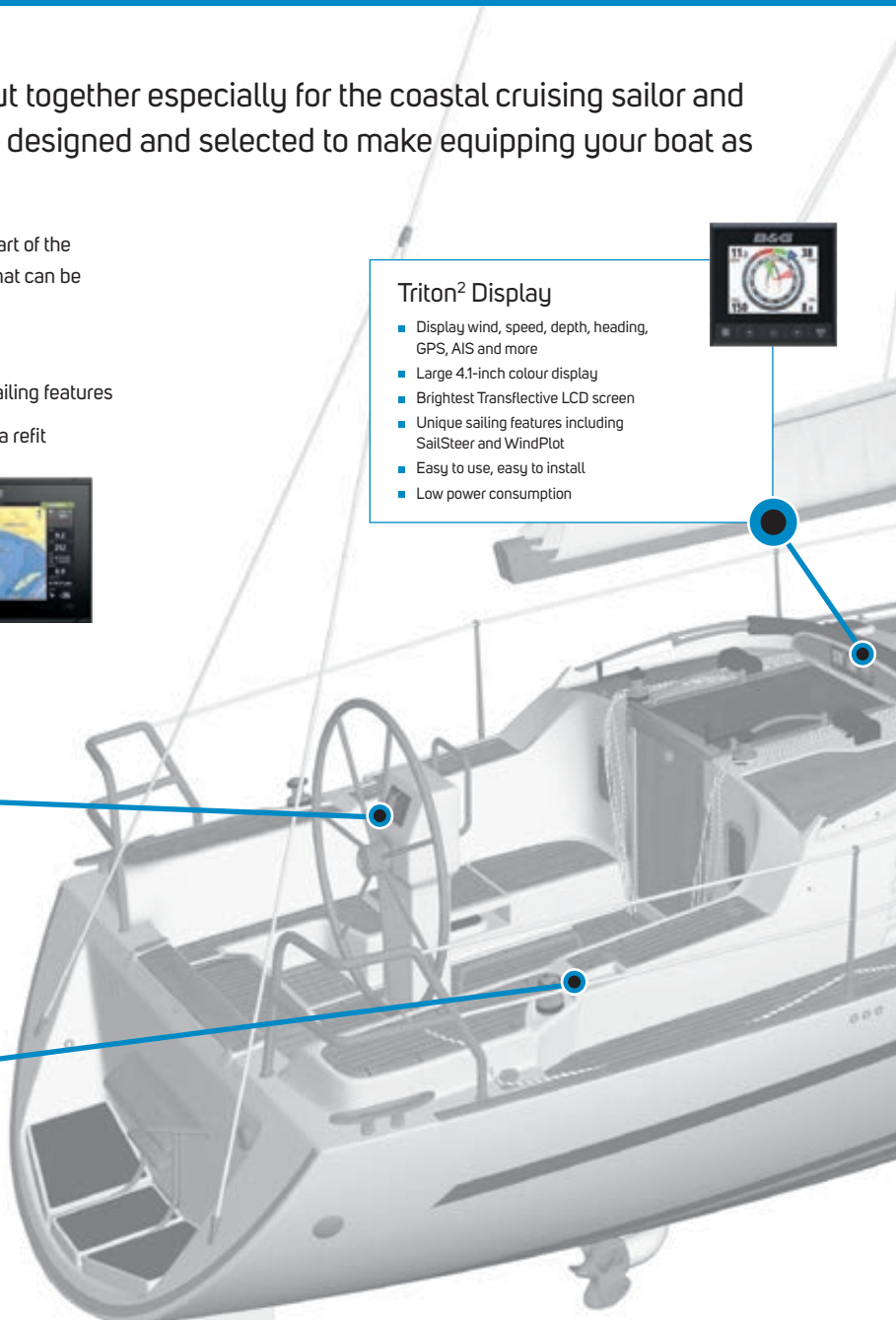
Triton² Pilot Controller

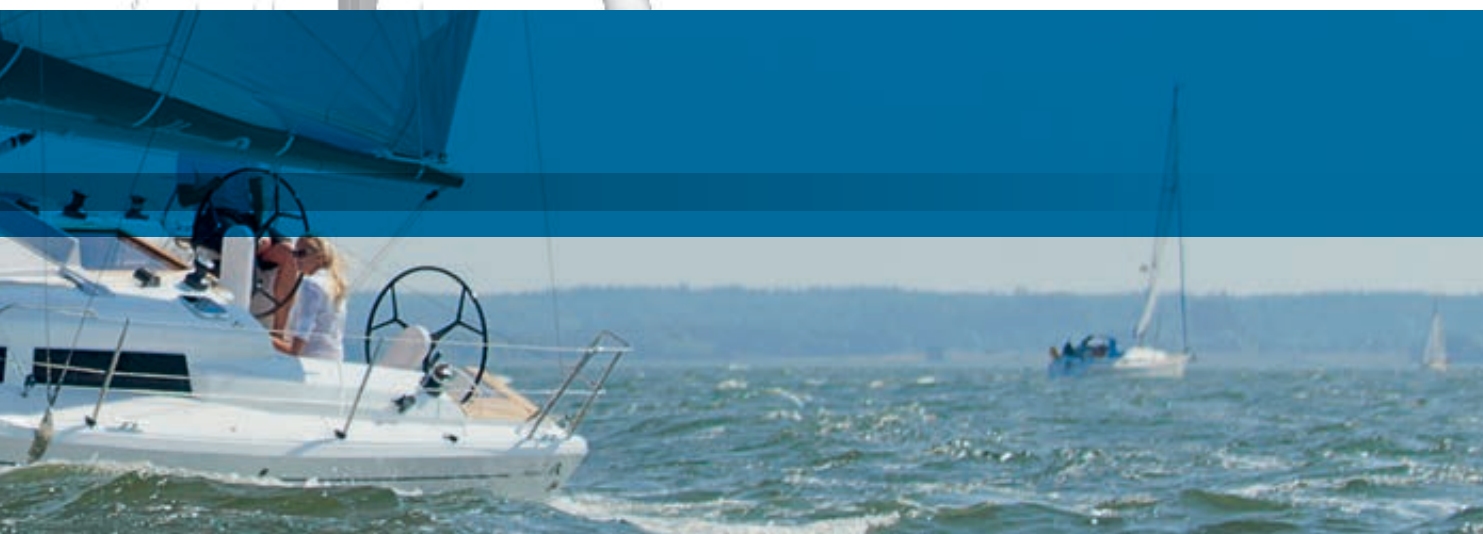
- Intelligent sail steering
- Smart Manoeuvre
- Chartplotter integration
- Easy to use



WR10 Wireless remote control

- Control your B&G Pilot
- Bluetooth Connectivity
- 30m range





Broadband 3G™ Radar

- Crystal clear image
- Excellent target detection and discrimination
- InstantOn™
- 0-28nm working range
- Low power consumption



V50 / H50

- V50 Fixed mount DSC VHF
- Built-in AIS receiver
- Powerful external speaker / PA
- Dual and TriWatch modes
- TrackYourBuddy feature
- AIS plot, waypoints, navigation and MOB
- Waterproof to IPx7
- Plug-and-play marine network integration
- H50 Wireless Handset



SonicHub® 2

- Bluetooth®
- 50W x 4 amplifier
- NMEA 2000® connection
- Dual USB ports
- Pre-amp Zone 3 output
- Pre-amp subwoofer output
- Dual Stereo AUX input
- Music control for up to two individual zones



ForwardScan®

- Forward-looking sensor
- Real time updates
- Ideal for use when anchoring



Networked Sensors

- Range of high quality sensors
- Networked for ease of installation
- Speed/Depth/Temperature
- Wind
- Compass
- GPS
- Rudder

Vulcan



Vulcan

The Vulcan series provides a versatile, easy-to-use chartplotter with multi-touch and pinch-to-zoom, with a 5", 7" or 9" display. Packed with innovations for sailors, Vulcan integrates with your on board instruments to unlock award-winning sailing features including SailSteer™ and SailingTime.

As sailors we know the importance of being able to glance at the display and get the data you need. We have made the latest Vulcan chartplotter the brightest and clearest in its class.

SIZES AVAILABLE



| | |
|-----------------------------------|---------------|
| Vulcan 5 (World Basemap) | 000-12453-001 |
| Vulcan 5 (Europe North CMAP MAXN) | 000-12453-006 |
| Vulcan 5 (Europe South CMAP MAXN) | 000-12453-007 |

| | |
|-----------------------------------|---------------|
| Vulcan 7 (World Basemap) | 000-12457-001 |
| Vulcan 7 (Europe North CMAP MAXN) | 000-12457-006 |
| Vulcan 7 (Europe South CMAP MAXN) | 000-12457-007 |

| | |
|-----------------------------------|---------------|
| Vulcan 9 (World Basemap) | 000-13214-001 |
| Vulcan 9 (Europe North CMAP MAXN) | 000-13214-006 |
| Vulcan 9 (Europe South CMAP MAXN) | 000-13214-007 |

Vulcan Key Features

- SIMPLE AND EASY TO USE TOUCH SCREEN; ADD WAYPOINTS AND ROUTES WITH YOUR FINGERTIPS
- A CHARTPLOTTER FOR SAILORS, WITH A WIDE CHOICE OF CHARTS
- AN INSTRUMENT DISPLAY WITH SAILSTEER, LARGE SINGLE, 2-WAY OR 4-WAY DATA VIEWS
- SIMPLE TO USE; REMOVE THE GUESSWORK FOR CONFIDENCE AND PEACE OF MIND
- SEE WHAT LIES AHEAD WITH BUILT-IN FORWARDSCAN*
- DOWNLOAD SOFTWARE AND CHARTS DIRECT, WITH BUILT-IN WI-FI

*Additional transducer required

Adding a Vulcan chartplotter to your boat is easy:

- Just add power for basic navigation and chart plotting functionality, with integrated high-precision GPS antenna
- For advanced sailing features simply add: wind sensor, compass sensor and speed log
- Mount where and how you want, with flush, console and bracket mounting options

For more information on your boat's compatibility with Vulcan visit www.bandg.com/upgrademyboat or speak to your local electronics dealer.

- Compatible with your existing B&G system
- Compatible with other manufacturer's products and systems
- Simple to add to a NMEA 2000 or NMEA 0183 system

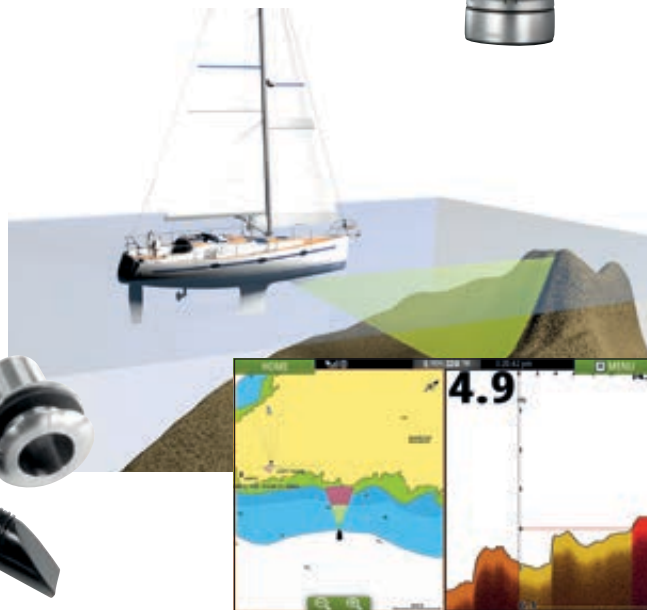


The Vulcan now comes with ForwardScan®

The award winning ForwardScan® forward-looking sonar shows what lies ahead under the water with approaching depth information. It transmits and receives up to ten times' faster for real-time updates. Explore poorly-charted or unfamiliar waters confidently with a clear image of the bottom ahead of your boat.

ForwardScan® Transducer

000-11674-001



Add Broadband Radar to your boat with Vulcan 9

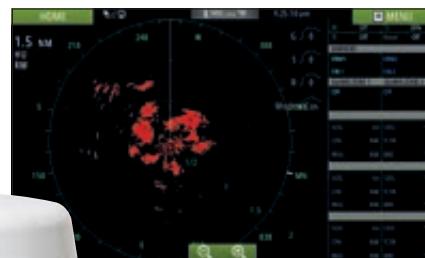
Award-winning Broadband Radar will keep constant watch over you and your crew. Whether you're interested in short range targets or longer range weather information, the Broadband 3G Radar and Broadband 4G Radar will provide the high levels of safety and target detection that you expect from B&G.

Broadband 3G™ Radar

000-10422-001

Broadband 4G™ Radar

000-10423-001



Triton²



Triton²

The clearest, multi-purpose sailing instrument with full-colour display providing sailors with a clear visual representation of key instrument data including Speed, Depth, Wind, Heading, AIS targets, GPS data and more.

The unique bonded LCD combines zero risk of condensation with an extremely wide viewing angle and displays custom sailing data like weather trends plus Pilot, wind, speed and depth information. Begin building your sailing system with a Triton² Pack.

Triton² Key Features

- DISPLAY WIND, SPEED, DEPTH, HEADING, GPS, AIS AND MORE
- LARGE 4.1-INCH COLOUR DISPLAY
- BRIGHTEST TRANSFLECTIVE LCD SCREEN
- UNIQUE SAILING FEATURES INCLUDING SAILSTEER AND WINDPLOT
- EASY TO USE, EASY TO INSTALL
- LOW POWER CONSUMPTION

Triton² Display

000-13294-001

Triton² Sensors



DST800

A compact multisensor that offers depth, speed and temperature data. Directly connected to the network for easy installation.



608 Wind Sensor

Derived from our Grand Prix level sensor the 608 provides the accurate wind angle and speed data relied upon by sailors.



Precision 9 Compass

The Precision 9 provides accurate heading data for steering compass, autopilot, True Wind Direction calculation and stabilisation of radar displays.

DST800

000-10960-001

608 Wind Sensor

000-13714-001



Precision 9 Compass

000-12607-001

Triton² Pilots

B&G Pilots have proven their outstanding accuracy and reliability by steering many of the world's top helmsmen to gruelling ocean race victory. This race-winning, performance autopilot technology is now available for the cruising sailor in an easy to use package. Triton² autopilot systems can be configured to suit almost every helm requirement. Follow our simple 3-step process below to specify a system that matches your requirements.

Choose from a selection of display and control options ranging from a fully integrated Zeus system to a dedicated autopilot control option.

| | | | | | |
|--------|---|----|---|----|---|
| STEP 1 | Triton² Pilot (display required) | OR | Vulcan (see pages 08-09) | OR | Zeus (see pages 14-17) |
| |  | |  | |  |

Select a Triton² Pilot Pack to match your boat (includes computer, compass, rudder feedback unit and network starter kit).

B&G Pilots are compatible with a number of third-party drive units in addition to B&G models. Consult your B&G specialist.

| | | | |
|--------|---|--------|---|
| STEP 2 | Triton² Pilot Computer / Compass / Rudder Feedback Unit | STEP 3 | Drive Units |
| |  | |  <p style="font-size: 0.8em;">Further drive units to suit a range of applications are available, see www.bandg.com</p> |

| | |
|---|---------------|
| Triton ² Pilot Controller | 000-13296-001 |
| Triton ² Pilot Controller & Display Pack | 000-13561-001 |
| NAC-2 Core Pack | 000-13335-001 |
| NAC-3 Core Pack | 000-13336-001 |

| | |
|-----------------------------------|---------------|
| RAM T0 - 12v (26ft-35ft boats*) | 000-13902-001 |
| RAM T1 - 12v (30ft - 40ft boats*) | RAM-T1-12V |
| RAM T2 - 12v (40ft - 50ft boats*) | RAM-T2-12V |
| RAM T2 - 24v (40ft - 50ft boats*) | RAM-T2-24V |
| RAM T3 - 12v (50ft+ boats*) | 000-13788-001 |
| RAM T3 - 24v (50ft+ boats*) | RAM-T3-24V |

*Consult your dealer to confirm the drive suitability for your boat.

Triton² Packs

It is easy to build your Triton² system with one of our starter packs that include network components and a choice of key instrument sensors.



Speed/Depth Pack

Includes: Triton² Display, DST800 Speed/depth/Temp Sensor, Micro-C Backbone kit.

| | |
|---------------------------------------|---------------|
| Triton ² Speed, Depth Pack | 000-13298-001 |
|---------------------------------------|---------------|



Speed/Depth/Wind Pack

Includes: Triton² Display, DST800 Speed/depth/Temp Sensor, 608 Wind Sensor, Micro-C Backbone kit.

| | |
|---|---------------|
| Triton ² Speed, Depth, Wind Pack | 000-13299-001 |
|---|---------------|

Performance Range

The B&G Performance Range has been designed for those that demand the most from their boat, always. Whether it's for offshore racing or blue water cruising, there is a constant need and desire for accurate and reliable data.

Whether it's sharing charts and receiving radar images across networked displays, connecting to a Wi-Fi hotspot for the latest data or integrating instruments and autopilot with NMEA 2000 - your B&G navigation system is designed to meet these demands. And for those looking to get even more out of their boat the H5000 provides powerful calibration options for the ultimate instrument accuracy to complement Zeus's unique sailing features such as RacePanel, Laylines and StartLine.

Zeus³

- Intuitive user interface
- SolarMax HD IPS display for clearer & wider viewing
- Multi-touch screen and keypad control
- B&G sailing software
 - SailSteer
 - SailingTime
 - Laylines
 - RacePanel including StartLine
- Built in Wi-Fi
- Internal 10Hz high-precision GPS
- Autopilot control integration
- Choice of cartography
- NASA diagnostics and service support



H5000 Graphic Display

- Unique bonded 5" 16:9 display
- Brightest display in class
- Clear data visualisation
- MOB display
- StartLine control
- SailSteer



H5000 Pilot

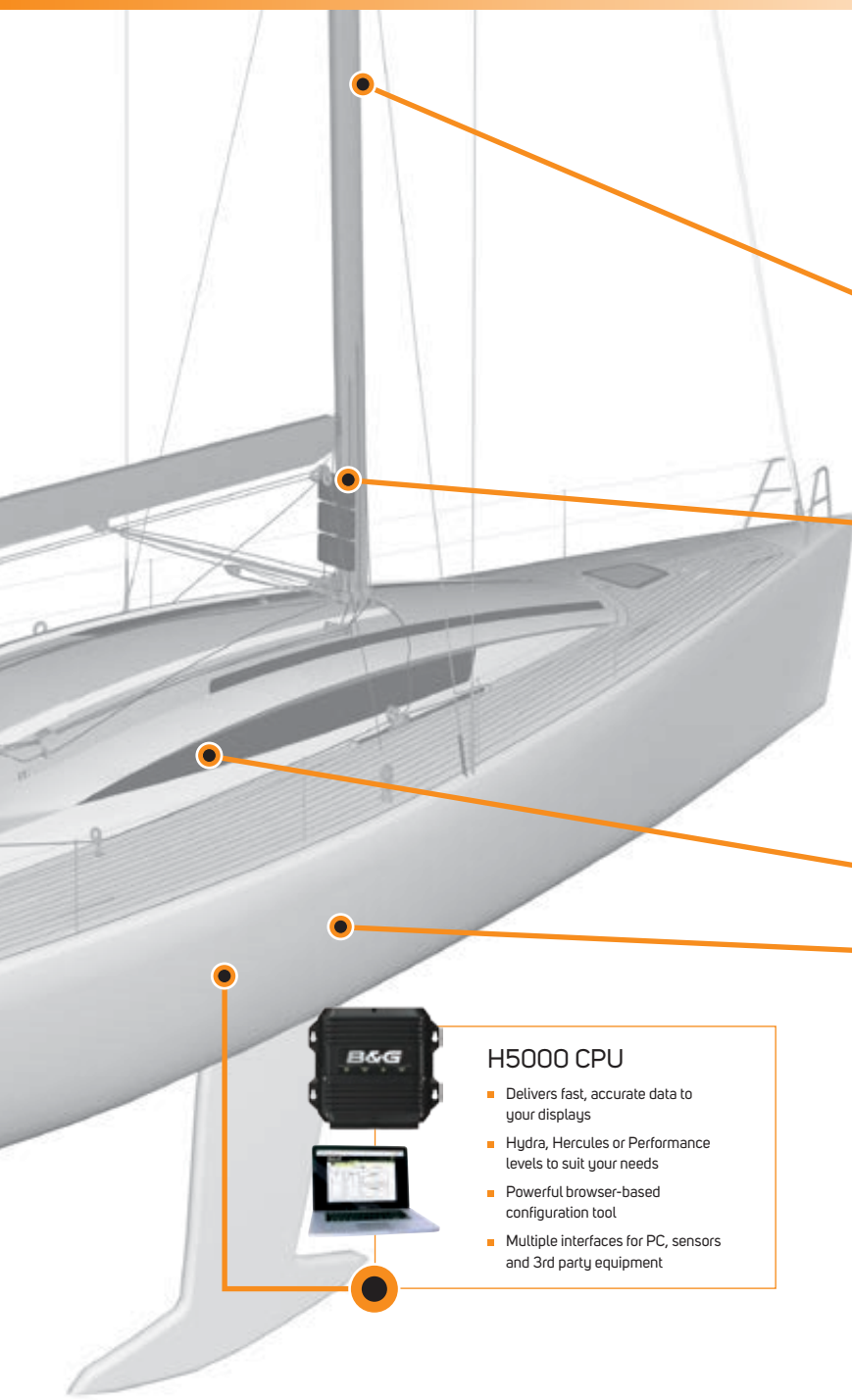
- Advanced Sail Steering
- Control via keypad or Zeus series chartplotters



WR10 Wireless remote control

- Control your B&G Pilot
- Bluetooth Connectivity
- 30m range





Broadband 4G™ Radar

- Crystal clear image
- Excellent target detection and discrimination
- Excellent target detection and discrimination
- InstantOn™
- 0-36nm working range
- Low power consumption



HV Displays

- 10/10, 20/20, 30/30 or 40/40 sizes



V90 / H50

- V90 Black Box DSC VHF
- Built-in AIS receiver
- Powerful external speaker / PA
- Dual and TriWatch modes
- TrackYourBuddy feature
- AIS plot, waypoints, navigation and MOB
- Waterproof to IPx7
- H50 Wireless Handset



H5000 CPU

- Delivers fast, accurate data to your displays
- Hydra, Hercules or Performance levels to suit your needs
- Powerful browser-based configuration tool
- Multiple interfaces for PC, sensors and 3rd party equipment



Precision Sensors

Wide selection of the highest quality sensors:

- Wind
- Speed
- Depth
- Barometer
- 3D Motion
- Rudder Angle and more.

Zeus³



Zeus³

Zeus³ is a complete chartplotter navigation system for blue water cruisers and regatta racers. The ultra-bright, wide-angle SolarMax HD IPS displays combine all-weather touchscreen technology with rotary dial and keypad controls.

Easily leverage dedicated, race-proven sailing features such as SailSteer, Laylines, and RacePanel. Connect with online services and mobile devices using built-in Wi-Fi, and integrate seamlessly with a wide range of instruments and accessories for greater safety, performance, and enjoyment on the water.

Zeus³ Key Features

- INTUITIVE USER INTERFACE.
- SOLARMAX HD IPS DISPLAY FOR CLEARER & WIDER VIEWING
- MULTI-TOUCH AND KEYPAD CONTROL
- B&G SAILING SOFTWARE
 - SAILSTEER
 - SAILINGTIME
 - LAYLINES
 - RACE-PANEL
- BUILT IN WIFI
- INTERNAL GPS
- INTEGRATED PILOT CONTROL
- CHOICE OF CARTOGRAPHY C-MAP AND NAVIONICS
- NASA DIAGNOSTICS AND SERVICE SUPPORT

SIZES AVAILABLE



| | |
|-------------------------------------|---------------|
| Zeus ³ 7" World Basemap | 000-13245-001 |
| Zeus ³ 9" World Basemap | 000-13246-001 |
| Zeus ³ 12" World Basemap | 000-13247-001 |
| Zeus ³ 16" World Basemap | 000-13248-001 |

Designed for sailors, built for sailing

View

From a 7" to the all-new 16" display, B&G's SolarMax HD IPS screen provides an ultra-sharp image, with huge viewing angles and amazing chart presentation. The clearest view of navigation and sailing data.

Control

New advanced touch screen provides reliable operation across a range of conditions, even heavy rain. A full function keypad provides a secondary control option, allowing you to be in control in all conditions.

Integrate

Built-in ForwardScan, NMEA 2000® and B&G Ethernet connectivity for multi-station radar, chart and sonar sharing. Integrated control allows direct operation of B&G Triton and H5000 Pilot systems. Video in and HDMI out (12" and 16" units) provides flexibility in system design.



Perform

Fast processing and efficient design provide super-responsive operation and smooth chart redraw for a satisfying user experience.

Sail

Designed exclusively for sailing, Zeus³ includes B&G's RacePanel features with integrated scaled StartLine view. Plus the award winning SailSteer, SailingTime and Layline features.

Wireless

Integrated Wi-Fi for easy access to GoFree™ Shop, charts, PredictWind™ weather, software updates, NASA support, screen mirroring app and more.

Zeus²



SIZES AVAILABLE

16"

19"

Zeus² Glass Helm

Zeus² Glass Helm is a super-fast, smart dual-screen multifunction navigation system for large cruising and performance sailboats. Realise unprecedented sailing navigation with B&G's composite SailSteer sailing information screen, WindPlot and SailingTime calculations. Zeus² Glass Helm features independent output, quad core high-power processing and intuitive multi-touch control and delivers lightning-fast charting, radar and sonar. Plus smart Autorouting and Easy Routing capabilities with extensive network compatibility.

Zeus² Glass Helm Features

- TOUCHSCREEN ZM MONITORS
- QUAD CORE ZEUS² PROCESSORS
- NMEA 2000®, 0183 AND ETHERNET COMPATIBILITY
- DUAL VIDEO INDEPENDENT OUTPUT*
- SLEEK, FLUSH MOUNT, GLASS FINISH
- SAILING-SPECIFIC FEATURES
- GOFREE™ WIRELESS COMPATIBLE
- LAYLINES WITH SAILING TIME
- WINDPLOT
- INTEGRATED PILOT CONTROL

SailSteer / SailingTime requires GPS, Speed, Wind and Heading input to function fully.

| | | | |
|---------------------------------------|---------------|--|---------------|
| Zeus ² Glass Helm 16" Pack | 000-13570-002 | Zeus ² Glass Helm processor | 000-11732-001 |
| ZM 16 Touch Monitor | 000-11736-001 | ZC2 Remote (Portrait) | 000-12365-001 |
| ZM 19 Touch Monitor | 000-11737-001 | ZC2 Remote (Landscape) | 000-12513-001 |

Zeus²



SIZES AVAILABLE

7"

9"

12"

Zeus² is an easy to use, ultra-responsive, multi-touch chartplotter with bespoke sailing features including enhanced sail navigation and SailSteer. Zeus² integrates seamlessly with your network and looks great thanks to a low profile design.

Zeus² Key Features

- SAILING-SPECIFIC FEATURES
- MULTI-TOUCH SCREEN
- ULTRA-SLIM DESIGN
- SAILSTEER
- LAYLINES WITH SAILING TIME
- WINDPLOT
- INTEGRATED PILOT CONTROL
- CHOICE OF CARTOGRAPHY
- RACEPANEL
- GOFREE™ WIRELESS COMPATIBLE
- VIDEO INPUT & OUTPUT*
- INTERNAL HIGH-SENSITIVITY GPS
- BRIGHT, WIDESCREEN DISPLAY
- NMEA 2000®, 0183 AND ETHERNET COMPATIBILITY
- DUAL MEDIA CARD SLOTS

SailSteer / SailingTime requires GPS, Speed, Wind and Heading input to function fully.
*Video output is only available on the 12"

| | |
|-----------------------|---------------|
| Zeus ² 7" | 000-11244-001 |
| Zeus ² 9" | 000-11189-001 |
| Zeus ² 12" | 000-11195-001 |

Perfect for multihulls



Multihulls

B&G is the perfect solution for multihull sailing boats. With a range of equipment that will suit coastal cruising, blue water cruisers and grand prix racers.

B&G have worked with the Team Phaedo to develop high speed record breaking solutions and with Knut Frostad, former Olympic yachtsman and Volvo Ocean Race skipper to develop the perfect cruising system for multihulls.

For more information visit www.bandg.com/multihull

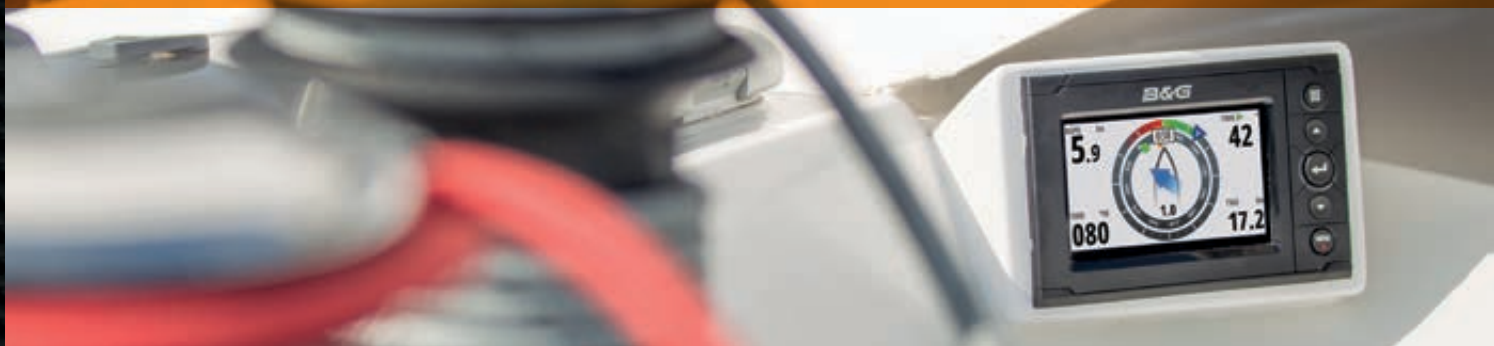


Rachel Fallon-Langdon / Team Phaedo



Rachel Fallon-Langdon / Team Phaedo

H5000



B&G's H5000 instrument and autopilot system delivers sailing-specific features and powerful race-proven technology with an ultra-fast CPU, convenient web-style interface access, full colour and 7-segment displays and a dedicated autopilot controller.

The system is powered by a smart Central Processing Unit (CPU) which runs three levels of software, Hydra, Hercules and Performance to match your sailing requirements.

H5000 Displays

This 5-inch, sunlight viewable, Graphic colour screen with a highly intuitive user interface is packed with sailing features including SailSteer and Start Line. Glass bonded for zero condensation and enhanced contrast. 5-inch monochrome, segmented Race display also available.

Graphic Display Features

- START LINE
- SAILSTEER
- WINDPLOT, FOR TRACKING WEATHER TRENDS
- SMART, STRAIGHTFORWARD MENUS
- BRIGHT COLOUR DISPLAY
- NMEA 2000® COMPATIBLE
- BUILT TOUGH
- ULTRA-FAST ARM PROCESSOR

Race Display Features

- BRIGHT 5-INCH DISPLAY
- VISUAL TARGET INDICATOR
- LOW POWER
- BUILT TOUGH
- ULTRA-FAST ARM PROCESSOR
- NMEA 2000® COMPATIBLE

| | |
|---------------|---------------|
| H5000 Graphic | 000-11542-001 |
| H5000 Race | 000-11543-001 |



H5000 CPU function levels

| FUNCTIONS | Hydra | Hercules | Performance |
|--|-------|----------|-------------|
| Performance Wind Filtering | • | • | • |
| 3D Motion corrected Wind support | | • | • |
| Ground Wind Speed and Direction | | | • |
| SOG as Boat Speed option | • | • | • |
| Dynamic Boat Speed Damping | | • | • |
| Polar Table and functions | | • | • |
| HV Display Context Switching mode | | • | • |
| Start Line proximity, with Bow Positioning | • | • | • |
| 16 Custom User Channels | • | • | • |

CALIBRATION

| | | | |
|--|---|---|---|
| AutoCal routines, including True Wind correction | • | • | • |
| Advanced True Wind Speed correction | | • | • |
| Boat Speed Linearity/Heel correction | | • | • |

INTERFACING

| | | | |
|---------------------------------------|---|---|---|
| Selectable NMEA0183 Input/Output | • | • | • |
| H5000 Webserver browser based control | • | • | • |
| H-Link Communications | | • | • |

SENSOR SUPPORT

| | | | |
|---|---|-------|---------|
| Dual Boat Speed input | • | • | • |
| Dual Wind Sensors (switching on wind angle) | | | • |
| Rotating Mast support for Wind Calculation | • | • | • |
| Port & Starboard Rudder inputs, with Toe-In | | | • |
| Advanced Linear channel types | | Set A | Set A+B |

H5000



H5000 Pilot CPU

The record-breaking B&G Pilot features dedicated sailing algorithms and steering modes - Gust Response, Recovery and High-Wind Response. It has been proven in the toughest of conditions and the most testing environments and is ideal for short-handed cruisers or racers.

H5000 Pilot CPU Features

- STEER TO COMPASS, WIND OR WAYPOINT
- APPARENT AND TRUE WIND STEERING
- EXPERT SAILING SYSTEMS INCLUDING GUST AND HIGH-WIND RESPONSE
- AUTO RESPONSE SWITCHING AND RECOVERY MODE

H5000 Pilot CPU

000-11554-001



H5000 Pilot Controller

Provides straightforward autopilot control and system setup from its dedicated keypad. As the primary Pilot Controller, or as a second station to a Zeus chartplotter, the Pilot Controller provides assured control and feedback via its high-resolution display.

H5000 Pilot Controller Features

- DEDICATED PILOT CONTROL
- FULL PILOT SETUP ACCESS
- GLASS BONDED, MONOCHROME DISPLAY
- STRAIGHTFORWARD INTERFACE

H5000 Pilot Controller

000-11544-001



Rachel Fallon-Langdon / Team Phaedo

H5000 Pilot Advanced Sailing Features

The H5000 Pilot isn't the same as other autopilots, its expert systems constantly monitor heading, wind, sea-state, heel angle and other variables to react to changes in conditions immediately, providing performance and safety in equal measure.

Recovery Mode recognises sudden course deviations caused by out of pattern waves or ship wakes and ensures that the yacht deviates less from the target course and returns to course quicker. Gust Response takes preventative action based on incoming H5000 or WTP3 instrument data to hold a more stable course in changeable wind conditions, while High-Wind Response naturally bears the yacht away if wind increases while reaching to keep the boat flatter and driving faster. B&G's H5000 Pilot contains failsafe systems and user configurable hard-limits to provide safety features to match its performance.

H5000

Performance Highlights

B&G's H5000 systems deliver high-performance, sailing-specific features and powerful race-proven technology to sailors who appreciate the best.

3D Motion



Wind measurement is affected by the wind induced at the top of the mast by the pitching and rolling of the yacht. The solution is 3D Motion correction. H5000 takes data from multiple sensors including high-specification rate-gyros to correct for induced wind, providing the best wind solution available in an instrument system.

Features

- HIGHLY ACCURATE WIND DATA
- HIGH-RESOLUTION HEEL/TRIM SENSORS
- HIGH PRECISION ANGULAR RATE GYROS
- INDUCED WIND CORRECTION
- IMPROVED AUTOPILOT PERFORMANCE

StartLine



H5000's StartLine feature provides high-resolution data for distance to line, distance to line ends, line bias and the boat-lengths gained by starting at the favoured end. H5000 StartLine uses BowPosition, calculating the position of the yacht's bow ten times per second. For the ultimate in starting performance interface H5000 with a Zeus3 system with scaled StartLine view.

Features

- DISTANCE BEHIND LINE
- TIME TO START
- LAYLINES TO START LINE ENDS
- LINE BIAS
- FAVOURED END GAIN CALCULATION

H5000 Interface



Browser-based configuration of the H5000 system enables advanced calibration, set-up and diagnostics without the hassle of negotiating a complex menu system. The powerful web-style interface can be accessed via PC, tablet or smartphone.

Features

- STRAIGHTFORWARD SET-UP, CONFIGURATION AND CONTROL
- DATA VISUALISATION TOOLS
- ETHERNET OR (OPTIONAL) WIRELESS
- SYSTEM DIAGNOSTICS
- SYSTEM BACK-UP AND RESTORE

Advanced Calibration



H5000 offers the ultimate in high resolution sensor input, the best processing techniques and optimum system calibration, with corrections for almost every function for the most precise data.

Features

- TIDE CORRECTED BOAT SPEED CALIBRATION
- DUAL SPEED SENSOR CALIBRATION
- TRUE WIND SPEED CORRECTION
- TRUE WIND ANGLE CORRECTION
- 3D SELF-LEARNING HEADING SENSOR CALIBRATION WITH PRECISION-9

Grand Prix Systems



Image above: Stefan Coppers / Team Brunel / Volvo Ocean Race
Image right: Yann Riou / Dongfeng Race Team / Volvo Ocean Race



WTP3 CPU

B&G's Grand Prix systems combine our most sophisticated electronics with industry-leading software to drive world-class performances and realise sailing ambitions. Our precision marine electronics and unrivalled sailing heritage inspire results. Beyond every milestone and success we strive to push sailing innovation. We're proud to build products our customers trust, anticipate, delight in and are inspired by – to push our capabilities and your sailing further, and together realise our dreams.

WTP3 System

WTP3, along with B&G's range of displays, sensors and software, is the ultimate Grand Prix instrument system.

The WTP3 system consists of a powerful multi-processor CPU linked to distributed data acquisition modules via three independent CAN networks. The possibilities for data collection and calculation are vast, supporting recent progression in both high-end racing and superyacht systems.

Contact your B&G Grand Prix specialist for more information.

The WTP3 meets three principal objectives

- TO PROVIDE THE MOST POWERFUL, FLEXIBLE AND RELIABLE INSTRUMENT SYSTEM AVAILABLE FOR THE PROFESSIONAL YACHT NAVIGATOR
- TO INCREASE THE ACCURACY OF THE DATA PROVIDED BY ELIMINATING THE EFFECTS OF BOAT MOTION AND PROVIDING POWERFUL CALIBRATION OPTIONS
- TO CALCULATE AND DISPLAY DATA MORE QUICKLY THAN ANY OTHER SYSTEM

Volvo Ocean Race • IMOCA 60 • Ultime • Fast 40 • Maxi • Wally • Swan • J-Class • Superyachts

Expand your B&G system



HV Displays

HVision bonded displays provide ultra clear instrument information with zero condensation. HV Displays store 14 configurable pages, so whether you want to see True Wind Angle, COG or SOG, getting the crucial information in the right place is simple.

| | |
|------------------|---------------|
| 10/10 HV Display | 000-11087-001 |
| 20/20 HV Display | 000-11088-001 |
| 30/30 HV Display | 000-11089-001 |
| 40/40 HV Display | 000-11090-001 |



Analogue Displays

B&G's Analogue displays provide a clear view of key data types in a classic display, meeting the aesthetic demands of classic yachts and providing instant understanding of important data, like Wind Angle, at a glance.

Analogue Displays – all models

See www.bandg.com



H5000 Expansion Modules

H5000 Expansion modules enable additional interfacing capacity. Serial Expansion for interfacing additional GPS units, Gyro compasses and other NMEA 0183 devices. Analogue Expansion enables additional inputs for 0-5V sensors including wind, mast angle and loadcells.

| | |
|--------------------------|---------------|
| H5000 Serial Expansion | 000-11726-001 |
| H5000 Analogue Expansion | 000-11725-001 |



ZG100 GPS Antenna

The Zeus ZG100 GPS Antenna provides high accuracy position, course and speed ten times every second ensuring maximum confidence in the displayed position. ZG100 also includes a multi-axis heading sensor for data optimisation and backup heading data.

ZG100 GPS Antenna

000-11048-001



Wind Sensors

High performance light weight wind speed and angle sensors, built with the quality you would expect from B&G. The B&G wind sensors range are highly accurate and stable across both light wind and heavy airs and have been developed from race winning technology.

| | |
|---------------------------------|------------|
| 213 Wind Sensor | 213-00-002 |
| Vertical Wind Sensor Pack 810m | BGH030001 |
| Vertical Wind Sensor Pack 1050m | BGH030002 |
| Vertical Wind Sensor Pack 1450m | BGH030003 |

Other wind sensor models are available, see www.bandg.com



High Resolution Barometer

Barometric trend is the offshore sailor's friend, a warning of a pending storm or calm. B&G's high resolution barometer provides data resolution of 0.1mb for highly accurate trend data.

| | |
|---------------------------|---------------|
| High-Resolution Barometer | 000-11552-001 |
|---------------------------|---------------|



Heading Sensors

The Precision-9 Compass supplies heading and rate-of-turn information to B&G instrument, autopilot, radar and navigation systems. Incorporating a nine-axis array of solid-state motion and orientation sensors, the Precision-9 also provides accurate roll, pitch and heave data to compatible equipment via its NMEA 2000® interface.

| | |
|-------------|---------------|
| Precision 9 | 000-12607-001 |
|-------------|---------------|



Rudder Sensors

Rudder angle is imperative for both autopilot performance and racing yacht performance optimisation, B&G's sensors provide highly accurate rudder data ten times per second.

| | |
|-------|---------------|
| RF25N | 000-10756-001 |
| RF300 | 20193744 |

Expand your B&G system



AIS

See and be seen. Reduce your risk of collision with this latest generation, fully integrated, Class-B AIS transponder. Compact in size, lightweight, fully waterproof, with low power draw.

| | |
|-------------------------------|---------------|
| NAIS-400 Class B AIS system | 000-10980-001 |
| NSPL-400 AIS Antenna Splitter | 000-10982-001 |



ZC2

Control your Zeus² display with the ZC2's intuitive keypad and multi-directional controller. Available in landscape or portrait versions, the ZC2 can also be used to control a B&G Pilot via any networked display.

| | |
|-----------------------|---------------|
| ZC2 - Portrait mount | 000-12365-001 |
| ZC2 - Landscape mount | 000-12513-001 |



ForwardScan®

ForwardScan® forward-looking sonar shows you what lies ahead under the water with approaching depth information. Enjoy a clear and easy to read image of the bottom ahead of your boat as ForwardScan® transmits and receives up to ten times faster for real-time updates.

| | |
|---|---------------|
| ForwardScan® Transducer | 000-11674-001 |
| ForwardScan® Transducer (no sleeve or plug) | 000-11675-001 |



WR10

Wirelessly control your yacht from anywhere on-board with this Bluetooth® Wireless Pilot Controller. Worn on the wrist or a lanyard, the WR10 works with H5000 and Triton Pilot systems, up to 30m from the waterproof base station.

| | |
|--|---------------|
| WR10 Remote Controller & BT-1 Base Station | 000-12316-001 |
| WR10 Remote Controller - additional remote | 000-12358-001 |



SonicHub® 2

The B&G SonicHub® 2 features integrated Bluetooth®, allowing you to stream music from a smartphone or tablet, playback audio/video from a USB storage device or listen to radio all with full control from your Zeus² or Vulcan display.

| | |
|----------------------|---------------|
| SonicHub® 2 | 000-12302-001 |
| 6.5" Speakers (pair) | 000-12306-001 |



V90 VHF

Stay connected with B&G's powerful V90 VHF radio. Supporting up to 6 handsets, it's packed with innovative features for inter- and intra-vessel communication, easy to read and built tough, with integral AIS receiver, foghorn, intercom and NMEA connectivity for sharing data on your MFD.

| | |
|----------------|---------------|
| V90 VHF System | 000-11676-001 |
|----------------|---------------|



V50 VHF

VHF with integrated AIS reception. Tri-watch and integrated distress key provide sailors with a class leading VHF. Unique 'Track Your Buddy' feature can display the positions of up to three friends.

| | |
|---------------|---------------|
| V50 VHF Radio | 000-11236-001 |
|---------------|---------------|



H50 Handset

The H50 is an optional wireless handset for the V50 & V90 VHF's. H50 combines impressive range with inductive charging for flexible communications at and away from the chart table.

| | |
|----------------------|---------------|
| H50 Wireless Handset | 000-11237-001 |
|----------------------|---------------|

Radar



B&G's award-winning Broadband Radar will keep constant watch over you and your crew. Whether you're racing offshore or blue water cruising in severe conditions, through fog, iceberg fields or at night, you'll be glad of the Broadband Radar range; receive a crystal clear image, right up to the bow of your boat.

Whether you're interested in short range targets or longer range information, the Broadband 3G Radar and Broadband 4G Radar will provide the high levels of safety and target detection that you expect from B&G.

Solid state technology does away with the traditional magnetron and instead offers lower emissions than a mobile phone, making these systems safe to mount anywhere, on any size boat. There are two Broadband Radar™ options, the Broadband 3G™ radar, which has a 28NM working range, and Broadband 4G™ radar, which has advanced features and up to a 36NM working range.

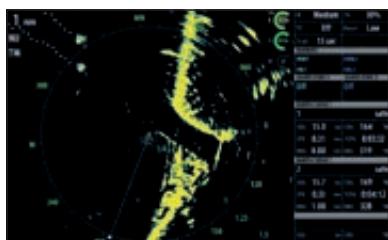
Broadband 3G™/4G™ Radar Features

- CRYSTAL CLEAR IMAGE
- AUTOMATIC CLARITY
- MARPA TARGET TRACKING
- DUAL GUARD ZONES
- INSTANT ON™ STARTUP
- LOW POWER CONSUMPTION
- EXTREMELY LOW EMISSIONS
- QUICK INSTALLATION
- HIGH TARGET SEPARATION
- NO MAIN BANG

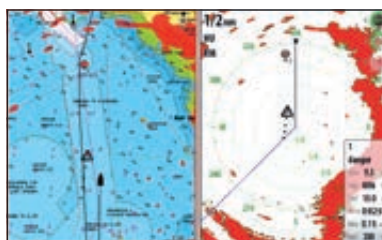
Broadband 4G™ Radar Additional Features

- UP TO 36NM WORKING RANGE
- CUSTOMISABLE TARGET SEPARATION
- BEAM SHARPENING
- HIGH SPEED MODE (48RPM)
- DUAL RANGE
- ADVANCED TARGET DETECTION

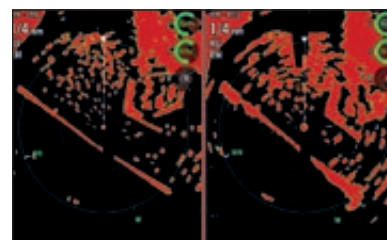
| | |
|---------------------|---------------|
| Broadband 3G™ Radar | 000-10422-001 |
| Broadband 4G™ Radar | 000-10423-001 |



Display up to 10 MARPA targets



Chart/Radar Overlay



Univalued target discrimination (left image)

Increase your B&G functionality

B&G supports a large variety of third-party mapping products, charts, APPS, service and digital connectivity.

GOFREE™



GoFree™ is powering the digital marine ecosystem with offerings like GoFree Shop.

GOFREE CONTROLLER APP

The GoFree Controller app allows you to view and/or control your Zeus² or Vulcan from a smartphone or tablet. The controller app is compatible with Android and IOS devices. Control function only available on tablets.

GOFREE SHOP

GoFree Shop is a one-stop shop for marine-mapping needs that gives sailors the capability to download purchases or Insight Genesis custom charts to a personal computer or directly to a Zeus² or Vulcan unit, for immediate use. Visit gofreeshop.com to learn more.



Cartography

B&G offer the widest range of cartography.

C-MAP

Packed with features that enhance any boating lifestyle, including Dynamic Raster Charts, High-Resolution Bathymetric Charts, Tides and Currents and Custom Depth Shading.

NAVIONICS

Compatible with B&G Vulcan and Zeus Series chartplotters, worldwide electronic marine cartography, for another dimension in charting selections. For more information and where to buy visit: www.navionics.com



By simply pressing the Naviop icon on the B&G home screen, users will be able to access a whole range of customizable controls allowing them to monitor, manage and control key functions such as:

| | | |
|----------------|-------------------|-----------|
| Engines | Navigation lights | Tankage |
| Generators | Fuel consumption | Batteries |
| Trim and flaps | Air conditioning | |
| Lighting | Entertainment | |



PredictWind is recognised as the world leader in high resolution wind forecasting for sailing, with their own global weather forecast models.

PredictWind was launched in 2008 in a web-based format by America's Cup weather strategist Jon Bilger and a team of technical experts. The aim of PredictWind is to be the world leader in supplying weather forecasting tools for every level of mariner who requires accurate weather forecasts.

PredictWind weather forecast services are integrated exclusively on B&G's Zeus and Vulcan products and are available via a Wi-Fi connection upon registration with PredictWind (premium features require a subscription).

Find out more about PredictWind: www.predictwind.com

Worldwide Support



Image above: Ricardo Pinto / Volvo Ocean Race

Many boats race or cruise a long way from home waters, when you purchase B&G equipment you can be confident that you will receive a high level of support wherever you are in the world.



Regatta Support

B&G's global regatta support is second to none. Our extended network of B&G specialists ensures expert presence at hundreds of events every year. The dedicated regatta support team provides an unequalled level of service to all B&G users, when and where they need it most.

Visit www.bandg.com for our full regatta support schedule.

B&G Advantage Service

In addition to the standard warranty features, B&G offers the Advantage Service Program, which is free and available to all B&G customers, offering the most comprehensive service and support available today.

The Advantage service program aims to provide the best possible experience with B&G products, even on occasions when support or replacement is required. B&G stands for high quality both in its products and support offerings.

For more information on the Advantage Service visit www.bandg.com



Designed to ensure optimal marine-electronics performance, the new Network Analyzer and Service Assistant (NASA) with integrated wireless diagnostics tools is now available for B&G multifunction displays.

No matter how far a vessel is from land, as long as boaters can connect to a wireless network, NASA gives immediate access to the latest features and the best support and service.



B&G

OFFICIAL SUPPLIER

**VOLVO
OCEAN
RACE**

ROUND THE WORLD

B&G

www.bandg.com

 facebook.com/bandgsailing

 [@bandg_sailing](https://twitter.com/bandg_sailing)

 youtube.com/bandgsailing

 [@bandgsailing](https://instagram.com/bandgsailing)

© NAVICO 2016. ALL TRADEMARKS ARE PROPERTY OF THEIR RESPECTIVE OWNERS. PRODUCTS, FEATURES AND SPECIFICATIONS ARE THE MOST RECENT AVAILABLE AND ARE SUBJECT TO CHANGE WITHOUT NOTICE. NO LIABILITY CAN BE ACCEPTED FOR ERRORS OR OMISSIONS IN THIS DOCUMENT.